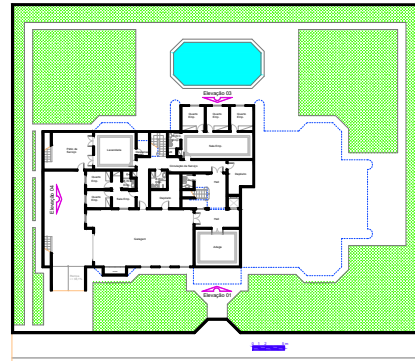
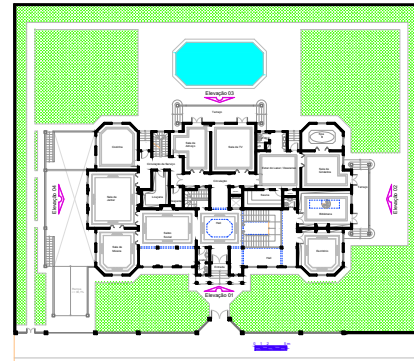


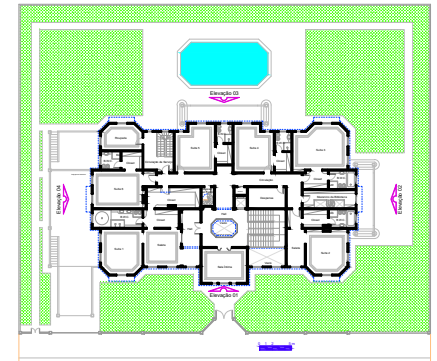
Implantação e Cobertura



Subsolo  
A = 948,31 m<sup>2</sup>

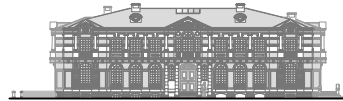


Térreo  
A = 538,87 m<sup>2</sup>



Superior  
A = 508,72 m<sup>2</sup>

Área Total = 1395,90 m<sup>2</sup>



Elevação 01



Elevação 02



Elevação 03



Elevação 04